

MORE VALUE  
FOR YOUR COMPANY

**KAWECO**



**KAWECO**  
WHEEL LOADER



# OUR COMPANY REESINK PRODUCTION BV

## FOCUS ON ADDED VALUE

Reesink Production BV is responsible for the production and sales of KAWECO and part of Royal Reesink BV. KAWECO has been building agricultural machinery for more than 60 years, with a focus on the added value for the customer, such as slurry tanks and applicators that deliver great work through their technology. All our machines are built in-house in Hengelo (GLD.).

KAWECO originated from the passion for agricultural machinery. We share this passion with the customer. We take care of the soil and the entrepreneur. Reliable, fast and efficient, so that the right action can be taken at the ideal time. In our philosophy, every machine must first and foremost be of value for the land. As a result, a KAWECO machine provides added value for the soil, for the crops and for the entrepreneur of today and for future generations.

In order to meet our customers' needs and to be able to produce efficiently, the KAWECO machines are built in a modular fashion. All machines (both series and specials) are produced exclusively on demand in a well-equipped production location with the help of modern techniques and experienced professionals. Both sheet metal work, welding work and paint work are done locally in the Netherlands. This is how we guarantee the quality of our products. KAWECO machines are built with quality in mind. This means that only quality components are used in production.

Reesink Production strives for a long-term partnership with its customers, based on mutual respect.

The Reesink Production management team.





# ADDED VALUE OF THE KAWECO WHEEL LOADER

The KW25-27 wheel loader is characterised by its large lifting capacity and high tipping load. Moreover, efficiency is an important characteristic of this powerhouse. For example, the operating speed under normal use is around 1500 rpm. In addition to fuel savings, this reduces noise and, above all, wear and tear. KAWECO wheel loaders are used by public authorities, in gardening and landscaping technology, in infrastructure, at riding stables and, above all, on farms. Its stable and powerful construction makes the wheel loader the perfect tool for any job. This is how a KAWECO wheel loader delivers added value for your company!



## UNPRECEDENTED POWER

To meet current emission requirements, the KW25-27 is equipped with a Yanmar Stage V engine with Diesel Particle Filter (DPF). In conjunction with the standard large oil pump, the engine provides sufficient torque under any conditions so that there is always enough power available.



## CABIN

A cab should provide safety and comfort. The 'open roof design' of the KW25-27 enables a good view of the boom when it is in the high position. A folding roof is also available as an additional option, to provide access to low passages. Furthermore, the flat cab floor offers drivers plenty of space and comfort while working.



## WORKING EFFICIENTLY

Efficiency was an important theme during the development of this machine. With the so-called 'Automotive ECO-Drive', sufficient working hydraulics are provided at the lowest possible engine speed. This results in: fuel savings, less wear and tear, and less noise. Thanks to the standard 51-litre hydraulic pump, there is always plenty of oil flow under any conditions.



## COMPREHENSIVE OPTION PACKAGE

At KAWECO, we believe that a machine must be a perfect match for the customer. Although KAWECO wheel loaders are already very well equipped as standard, an extra option package is also available. In addition to all these options, there is a wide range of tyres with different profiles and dimensions to suit every purpose at your company.







## INGENIOUS AND COMFORTABLE



One unique and distinctive part of the new KAWECO wheel loader is its standard cab suspension. The cab suspension has been mounted in four different places under the cab. The suspension can be adjusted at the rear of the cabin, ensuring optimal driving and working comfort.



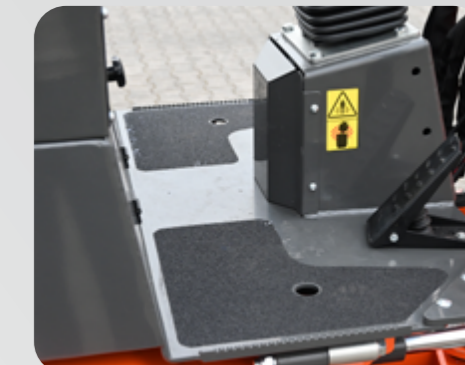
The machine is largely controlled by using the multifunctional joystick. In addition to operating the boom, low or high driving speeds can be switched on. Optionally, the 3rd and/or 4th hydraulic function can be operated electrically via the joystick.



For maintenance or service purposes, it is vital to have easy access to the machine's components. The cab can easily be tilted with two gas springs.



See the status of your machine at a glance. The digital display is clearly arranged so that all the necessary information is easily visible. The engine speed, driving speed, operating hours counter and the current time are also always visible.



The flat cab floor gives the driver plenty of legroom during use.



## POWERFUL AND EFFICIENT



The powerful Yanmar Stage V motor, in combination with the driving hydraulic pump and the working hydraulic pump result in an unprecedented output. Tractive force and lifting capacity measurements show that the KW25-27 is a real powerhouse. Thanks to the so-called 'Automotive ECO-Drive', there is always sufficient hydraulic oil available at the lowest possible engine speed.

The sophisticated P-kinematics allow the Euro board to remain vertical during the operation of the boom. This is particularly noticeable when using a pallet fork.

## FLEXIBLE AND SAFE



**FAST AND SIMPLE!**



Being unable to reach certain areas due to low passages is now a thing of the past. The KW25-27 can be equipped with an optional folding roof. It offers the driver plenty of flexibility because the roof can easily fold up and down. The folding roof is ROPS tested, ensuring driver protection if the machine rolls or tips over.



# TECHNICAL DATA **KW25-27**

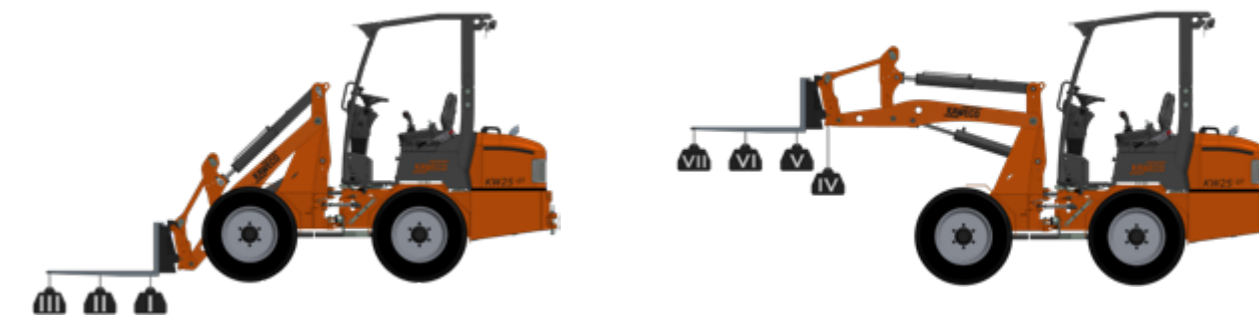
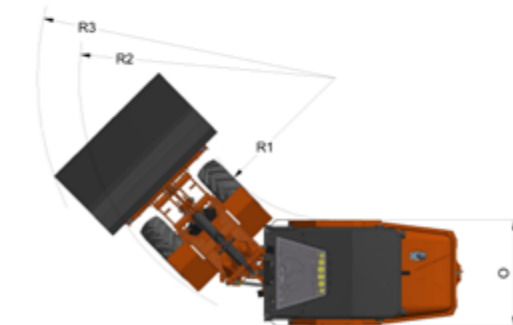
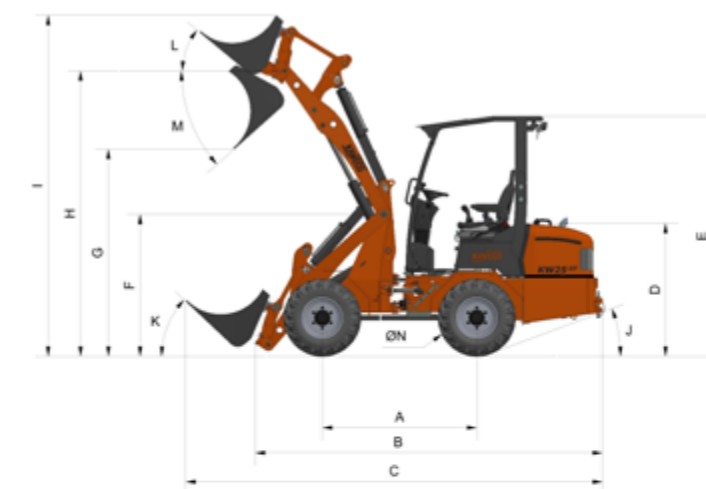
| TECHNICAL DATA                |  |
|-------------------------------|--|
| MODEL                         | KW25-27  |
| Total weight (without bucket) | 2,300 kg   |
| Traction                      | 2,150 kg   |
| Lifting capacity              | 1,850 kg   |
| Tipping capacity              | 2,000 kg   |
| Max. lifting height           | 2,900 mm   |
| Tyres                         | BKT 10.0/75*15.3 AS  |
| Engine                        | YANMAR - 3TNV88C-DYEM (stage V)  |
| Power                         | 27 kW (37 hp)  |
| Fuel tank capacity            | 44 litres  |
| Model                         | Hydrostatic four-wheel drive   |
| Axles                         | 8 tonne planetary axles  |
| Differential                  | Limited slip (LS)  |
| Number of driving speeds      | 2  |
| Max. driving speed            | 20 km/h  |
| Driving hydraulics            | 111 litres/min (350 bar)   |
| Working hydraulics            | 51 litres/min (190 bar)  |
| Hydraulic tank capacity       | 38 litres  |
| Parking brake                 | Drum brake   |
| Pivot                         | Pendulum control with 2 cylinders  |
| Cab                           | Open cab with safety roof (ROPS/FOPS), cab suspension                          |
| Operating lights              | Work light on the boom (LED)   |
| Coupling                      | Euro board with hydraulic lock   |
| Hydraulic connection          | 3rd function at the front (incl. locking)                                      |
| Other standard design:        | Counterweight with integrated tow bar, electronic hydraulic oil fill indicator |

# TECHNICAL DATA **KW25-27**

| DIMENSIONS* |                                   |            |
|-------------|-----------------------------------|------------|
| A           | Wheelbase                         | 1,575 mm   |
| B           | Total length                      | 3,540 mm   |
| C           | Length with bucket                | 4,248 mm   |
| D           | Seat height                       | 1,330 mm   |
| E           | Max. height ROPS/FOPS safety roof | 2,450 mm   |
| F           | Front frame height                | 1,450 mm   |
| G           | Max. dumping height               | 2,113 mm   |
| H           | Max. lifting height               | 2,909 mm   |
| I           | Height with bucket                | 3,478 mm   |
| J           | Max. ramp angle                   | 20 degrees |
| K           | Overtaking angle (on the ground)  | 43 degrees |
| L           | Overtaking angle                  | 40 degrees |
| M           | Tipping angle                     | 42 degrees |
| N           | Standard tyre diameter            | 780 mm     |
| O           | Total width                       | 1,070 mm   |
| R1          | Inside turning radius             | 1,453 mm   |
| R2          | Outside turning radius            | 2,611 mm   |
| R3          | Turning radius with bucket        | 3,037 mm   |

\* Standard machine with tire 10.0/75\*15.3

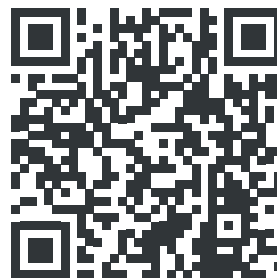
| TIPPING CAPACITY (kg) |       |
|-----------------------|-------|
| I                     | 2,897 |
| II                    | 1,857 |
| III                   | 1,367 |
| IV                    | 2,016 |
| V                     | 1,689 |
| VI                    | 1,265 |
| VII                   | 1,011 |



# MORE VALUE FOR YOUR FIELD



KAWECO originated from the passion for agricultural machinery. In our philosophy, every machine must first and foremost be of service to your company. As a result, a KAWECO machine provides added value for today's entrepreneur and for future generations.



+31 (0) 88 134 29 00  
WWW.KAWECO.COM

Molenenk 24  
NL-7255 AX Hengelo (Gld.)

